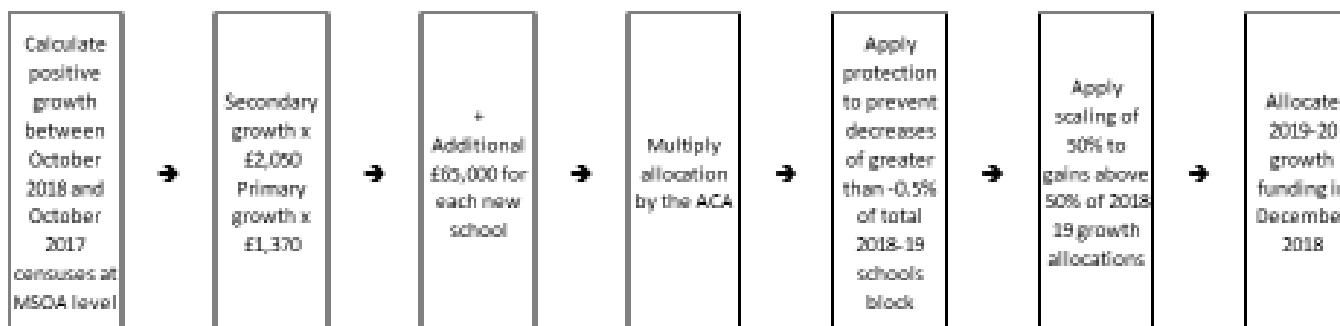


APPENDIX 4

New methodology for allocating pupil growth funding to LA's

Summary of new growth methodology



Historical funding

Year	Budget	Actual	Variance
2017/18	Not identified separately funding included in SBUF	£1,782,426*	-
2018/19	£1,782,426	£1,668,320*	£114,106**
2019/20	£1,919,792	£1,573,426*	£346,366**

*Contains expenditure allocated to schools through the pupil growth contingency and growth funded through varying schools pupil numbers.

**The variance is used to offset expenditure allocated to schools through the local funding formula in the Schools Block.